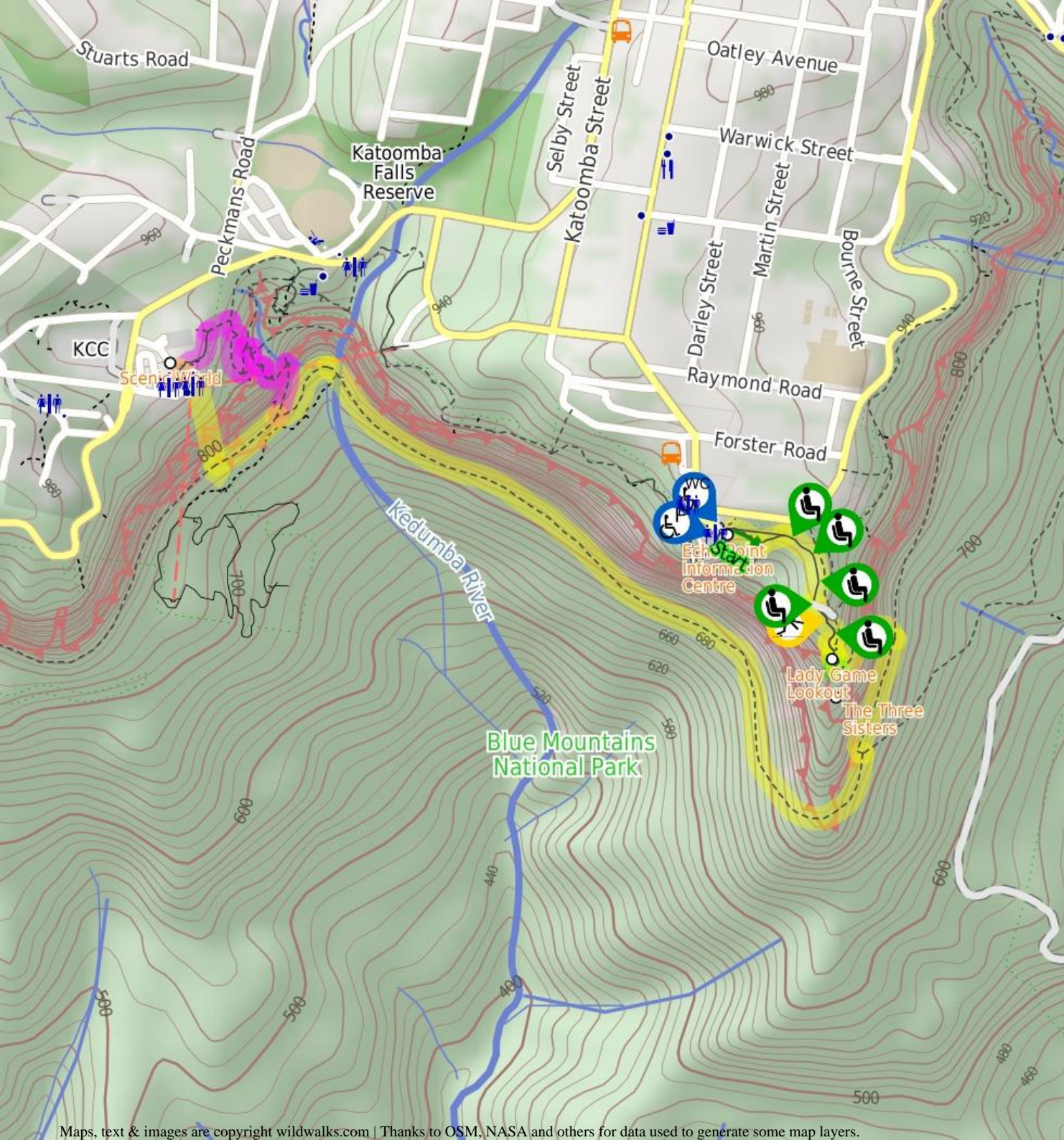




Scenic Railway - Federal Pass Track

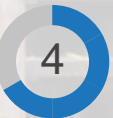


3 hrs

Hard track

3.1 km One way

282m



This walk starts at the world renowned Echo Point lookout. After exploring the Three Sisters, the walk descends steeply into the valley and meanders around the base of the Three Sisters and Katoomba Falls. A leisurely and exciting ride up the Scenic Railway replaces the long walk back up the hill.

683m

952m

Blue Mountains National Park

Echo Point Information Centre

This modern building at Echo Point is a great source of information. It is open daily from 9am-5pm (except Christmas Day). There is a large range of books, maps and information about the area (and ice creams). There are toilets opposite the entrance, and mobility parking opposite. For more information, phone 1300 653 408. [More info.](#)

Lady Game Lookout

Lady Game Lookout is a narrow, fenced lookout above the Three Sisters. The track to this lookout starts just near the archway which marks the start of the Giant Staircase. Lady Game Lookout provides a bird's-eye view over the Three Sisters and is a popular stop whilst exploring the area.

The Three Sisters

This well-known rock formation can be found just south of Katoomba, and can be viewed from many of the cliffside lookouts, from Narrow Neck all the way around to Sublime Point. Historically, this formation appears in Aboriginal 'Dream Time' stories, where three sisters were transformed into stone. This iconic rock formation is popular amongst tourists and bushwalkers alike. [More info.](#)

Scenic World

Scenic World is one of the most renowned tourist attractions of Katoomba and the Blue Mountains. Located on the cliffs of the Jamison Valley, visitors can enjoy a ride on the Scenic Railway (the world's steepest incline railway) or the Scenic Cableway, into the Jamison Valley, and explore the Scenic Walkway from the base. Alternatively, the Scenic Skyway offers a bird's eye view over the valley, with a glass floor to enhance the experience. Scenic World also features a revolving restaurant, a cafe and a kiosk, in addition to the documentary theatre and souvenir shop. Rides can be purchased, starting from \$16 for adults and \$10 for children, and combination or family passes are available. [More info.](#)

Before You walk

Bushwalking is fun and a wonderful way to enjoy our natural places. Sometimes things go bad, with a bit of planning you can increase your chance of having an enjoyable and safer walk. Before setting off on your walk check

- 1) Weather Forecast ([BOM Central Tablelands District](#))
- 2) Fire Dangers ([Greater Sydney Region](#))
- 3) Park Alerts ([Blue Mountains National Park](#))
- 4) Research the walk to check your party has the skills, fitness and equipment required
- 5) Agree to stay as a group and not leave anyone to walk solo

Think before you TREK

The 'Think before you TREK' program developed by NSW Police & NPWS promotes the benefits of planning ahead for your bushwalking trip by using an easy to remember acronym:

- T** Take adequate supplies of food, water, navigation and first aid equipment.
- R** Register your planned route and tell friends and family when you expect to return.
- E** Emergency beacon (PLB's) should be carried on walks with significant gaps in mobile coverage (check terrain profile).
- K** Keep to your planned route and follow the map and walking trails.

Topo Maps

The maps provided on wildwalks are helpful, but there are times where you may need maps covering a broader area. Maps that cover this walk include;

- 1:50 000 Map Series:**Six Foot Track
1:25 000 Map Series:89301S KATOOMBA
1:100 000 Map Series:8930 KATOOMBA

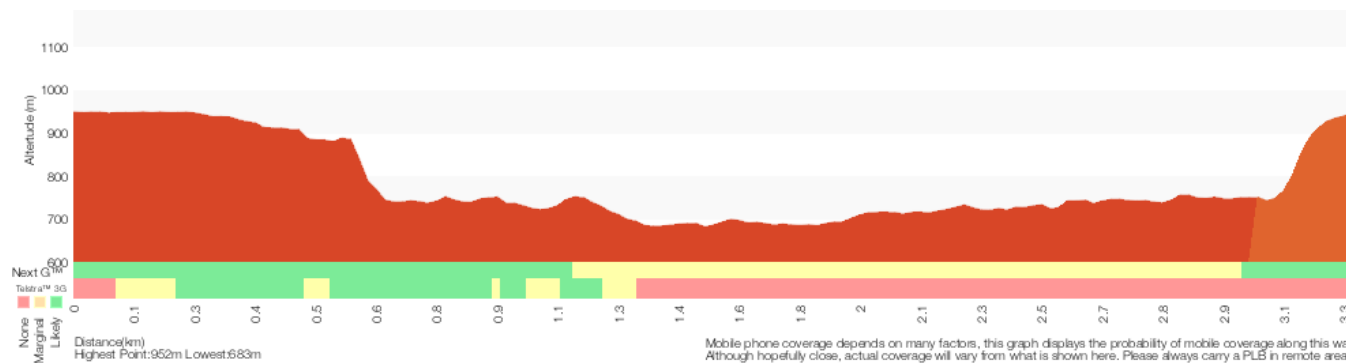
Grade

This walk has been graded using the AS 2156.1-2001. The overall grade of the walk is determined by the highest classification along the whole track.



Grade 4/6
Hard track

Length	3.1 km One way
Time	3 hrs
Quality of track	Clear and well formed track or trail (2/6)
Signs	Clearly signposted (1/6)
Experience Required	No experience required (1/6)
Weather	Storms may impact on navigation and safety (3/6)
Infrastructure	Generally useful facilities (such as fenced cliffs and seats) (1/6)



Are you ready to have fun?

Please ensure you and your group are well prepared and equipped for all possible hazards and delays. Check park closures, weather information and Fire Danger Rating before setting out. Optional side trips and alternate routes noted are not included in this walk's overall grade, length or time estimate. Please allow extra time for resting and exploring areas of interest. The authors, staff and owners of wildwalks take care in preparing this information but will not accept responsibility for any inconvenience, loss or injury you may experience. Please take care, have fun - Happy Walking.

Getting there You can get to Echo Point Archway Intersection (gps: -33.732, 150.3127) by car or bus. Car: Parking fees apply in the area.

You can get back from Scenic World (gps: -33.7286, 150.301) by car or bus. Car: There is free parking available.

Find up to date and more information including; travel directions, weather, park closures and walker feedback at <http://wild.tl/fpxx>

0 | Echo Point Information Centre

This modern building at Echo Point is a great source of information. It is open daily from 9am-5pm (except Christmas Day). There is a large range of books, maps and information about the area (and ice creams). There are toilets opposite the entrance, and mobility parking opposite. For more information, phone 1300 653 408. [More info.](#)

0 | Echo Point Archway Intersection

(430 m 12 mins) From the archway, this walk follows the lower of the two footpaths heading away from Echo Point, for approximately 30m, before coming to the intersection of the Spooners Lookout track.

Turn left: From the intersection, this walk follows the 'Three Sisters' arrow gently uphill along the concrete path, keeping the main valley behind and to the left. The track then leads up, past a short fence, to a clear intersection with the Three Sisters Walk.

Continue straight: From the intersection, this walk follows the 'Three Sisters' 400m' arrow downhill along the concrete path, keeping the valley to the right. After about 15m the walk leads past a stone seat (on the left), with a blue tongue lizard sculpture. The walk continues gently downhill for another 60m to pass another sandstone seat (on the left). From here the path winds gently downhill for another 70m to find yet another sandstone seat (on the left). The path continues downhill for another 45m to find a clear intersection marked with a large 'Three Sisters Walk' sign. On the right is a small flat loose gravel area with two seats.

Continue straight: From the intersection, this walk follows the 'Three Sisters, Giant Stairway' sign moderately steeply downhill along the smooth concrete path. After about 90m this path leads past stone seat (on the left) in a small sandstone overhang. Check the miniature cicada sculptures above the overhang. From here the this walk continues a downhill along the path for about 30m to find the fenced Oreades Lookout (on the right).

0.43 | Oreades Lookout

(20 m 1 mins) Continue straight: From Oreades Lookout platform, this walk follows the main path down the steps, keeping the valley views to the right. At the bottom of the first set of steps the walking comes to an intersection with a track (on the left).

0.45 | Int of Lady Game Lookout Track and the Three Sisters

(20 m 1 mins) Continue straight: From the intersection, the walk follows the footpath down the gentle hill towards the Three Sisters, passing under a rock archway and coming to the top of the Giant Staircase.

0.46 | Optional sidetrip to Lady Game Lookout

(10 m 1 mins) Continue straight: From the intersection, the walk follows the

footpath down the hill towards the Three Sisters for about 10m before coming to the Lady Game Lookout. At the end of this side trip, retrace your steps back to the main walk then Turn right.

0.46 | Lady Game Lookout

Lady Game Lookout is a narrow, fenced lookout above the Three Sisters. The track to this lookout starts just near the archway which marks the start of the Giant Staircase. Lady Game Lookout provides a bird's-eye view over the Three Sisters and is a popular stop whilst exploring the area.

0.46 | Top of the Giant Staircase

(40 m 4 mins) Turn left: From the intersection, the walk follows the steep stairs, winding down the side of the cliffs, to the intersection next to the bridge (which goes across to the overhang under the First Sister).

0.5 | Optional sidetrip to The Three Sisters

(10 m) Turn right: From the intersection, the walk crosses the bridge over to the Three Sisters. At the end of this side trip, retrace your steps back to the main walk then Veer right.

0.5 | The Three Sisters

This well-known rock formation can be found just south of Katoomba, and can be viewed from many of the cliffside lookouts, from Narrow Neck all the way around to Sublime Point. Historically, this formation appears in Aboriginal 'Dream Time' stories, where three sisters were transformed into stone. This iconic rock formation is popular amongst tourists and bushwalkers alike. [More info.](#)

0.5 | The Three Sisters Bridge intersection

(200 m 19 mins) Veer left: From the bridge, the walk goes steeply down the cliff using the metal Giant staircase with handrails. Along the way there are magnificent views of the valley, with chairs to help enjoy various outlooks. The walk continues to descend steeply until coming to an intersection with a flat bush track, signposted as the 'Dardenelles Walking Track'.

0.71 | Bottom of Giant Staircase

(290 m 10 mins) Turn right: From the bottom of the Giant Staircase, the walk follows the 'Scenic Railway' sign, keeping the main cliff to the right. The track continues with some great views over the Valley, and at several points, there are small seats to enjoy these fine views. The track then comes to a well-signposted intersection, with signs pointing along the 'Federal Pass Track' and 'Dardanelles Pass'.

1 | Int of Federal Pass, Scenic Railway and Dardenelle

(1.7 km 52 mins) Turn right: From the intersection, the walk follows the 'Federal Pass' sign towards 'Scenic Railway', keeping the main cliffs on the right. Not long after the intersection, the track passes 'under the sisters' rock formation (signposted). From here, the track turns and continues along a relatively stretch and, at several points, passes some notable rock formations and caves embedded in the cliffs. There are occasional good views that are not shrouded by the trees. The walk continues until coming to the base of Katoomba Falls, crossing these using a metal bridge known as 'Cooks Crossing'. (Just across the bridge, there is a picnic table.)

2.72 | Cooks Crossing

(170 m 5 mins) Continue straight: From the intersection, this walk heads south-west away from Katoomba Falls along the bush track, soon passing the signposted 'Turpentine Tree'. Shortly after this tree, the track comes to an intersection with another bush track and set of stairs (on the right, signposted as 'Furber Steps').

2.89 | Alternate Route Int of Furber Steps and Scenic Rai

(700 m 24 mins) Turn right: From the intersection, this walk heads up the stairs. After the first section, the walk flattens out slightly as it zigzags up the hill. The track also goes under several large overhangs before coming to an intersection and a 'Vera's Grotto' sign.

Turn left: From the intersection, this walk follows the 'Scenic Skyway' sign up the wooden steps and across the short wooden boardwalk to the other side. The track continues with the hand railing on the left, until reaching the base of the Furber Steps. From here, the walk continues up the concrete steps, zigzagging steeply up the side of the cliff, until reaching the Furber Lookout at the base of the last flight of steps.

Continue straight: From the Furber Lookout, this walk heads up the concrete stairs, climbing to the top. The walk passes the 'Furber Steps' signpost and continues along the bush track, winding up along the side of the hill until coming to the intersection of the Furber Steps and the Lynes Point tracks.

Turn left : From the lookout, this walk follows the bush track, heading down the short metal staircase to the intersection of the Lynes Point bush track at the bottom.

Continue straight: From the lookout, this walk heads up the stairs, climbing to the top. Here it continues along the bush track, winding past a large rock overhang with a bench seat underneath and through the forest for a short while, to the signposted intersection of the 'Underfalls Walk'.

Continue straight: From the intersection, the track follows the bush track heading up the hill, winding up through the forest for a short while. Soon the track bends slightly around to the right and comes to the Rainforest Lookout, at the base of the set of wooden steps.

Turn left : From the Rainforest Lookout, this walk heads up the wooden steps, climbing to the top where it comes to a 'T' intersection with the 'Round Walk' track.

Turn left: From the intersection, this walk follows the 'Scenic Skyway' sign down the wooden steps, then flattens out for a short distance before continuing up the other side, climbing up the long, steep set of wooden steps. At the top, the walk comes to the intersection of the Round Walk and the Juliets Balcony track (unsignposted).

Veer right: From the intersection, this walk heads to the top of the metal stairs. The track then continues steeply up through the bush, climbing to Vanimans Lookout.

Turn left: From Vanimans Lookout, this walk heads up the wooden steps, climbing up the hill through the bush until it comes to the intersection with the Prince Henry Cliff Walk.

Turn left: From the intersection, this walk follows the only unsignposted bush track up the gentle hill. It winds up the wooden steps, bending around to the left until it flattens out at the intersection with the Scenic World footbridge.

Continue straight: From the intersection, this walk heads along the wooden footbridge that winds around the back of the Scenic World multi-story car park, to the concrete footpath. The walk continues around the main building, climbing up some concrete steps to the main entrance of Scenic World.

2.89 | Int of Furber Steps and Scenic Railway Track

(170 m 4 mins) Continue straight: From the bottom of Furber Steps, this walk follows the 'To base of scenic railway' sign keeping the handrail on the left, and following the flat bush track. This track passes through a small gate over a metal bridge at the bottom of the Scenic Railway.

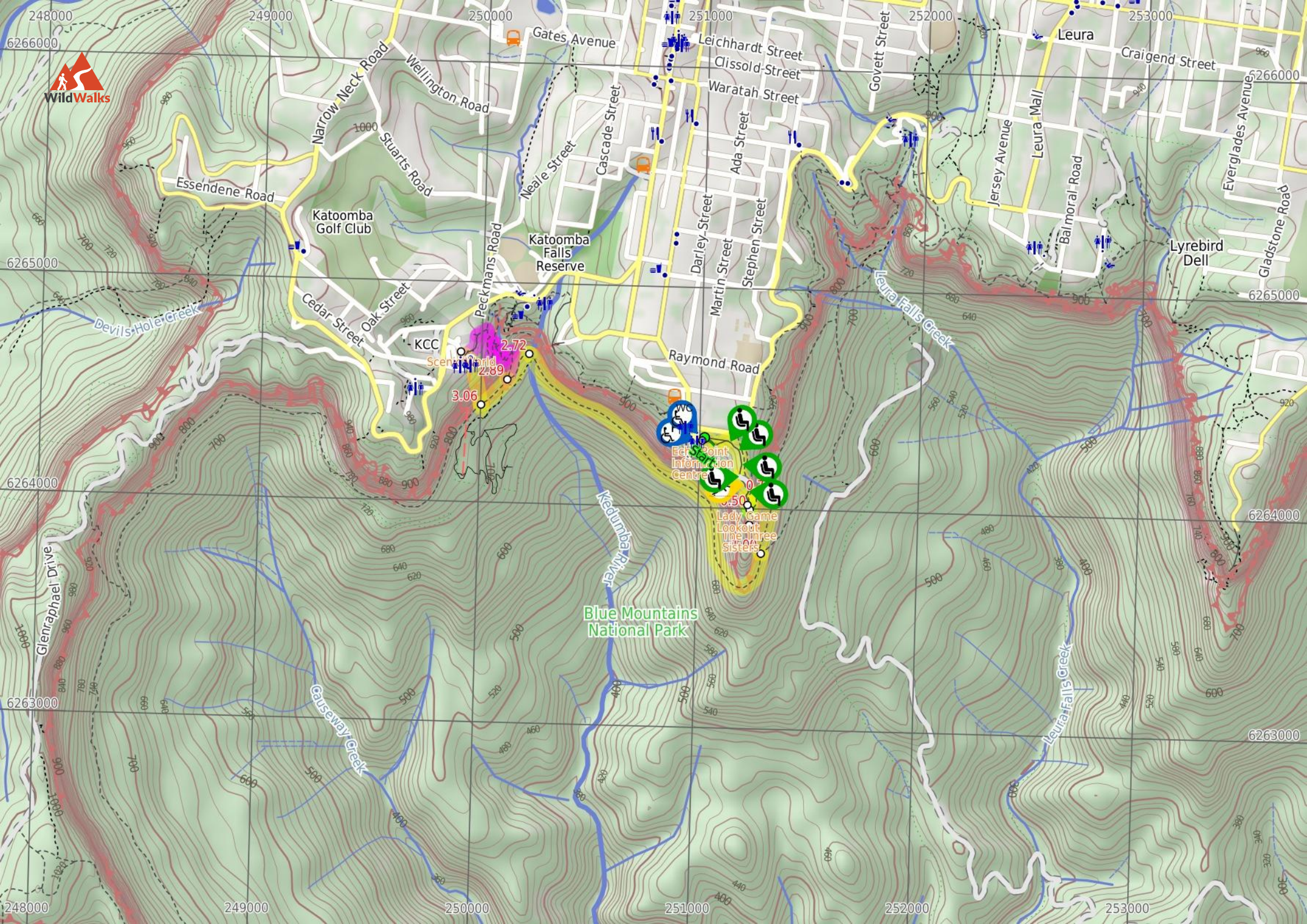
3.06 | Scenic Railway (Bottom Platform)

(300 m 26 mins) Turn left: From the bottom platform, this walk heads up to the cliff top using the Scenic Railway. Hang on tight! This 415m-long journey is the world's steepest railway. Use of the railway costs \$10 for adults and \$5 for children one-way. Last train normally at 4:45pm (opens at 9am). [More info.](#)

3.35 | Scenic World

Scenic World is one of the most renowned tourist attractions of Katoomba and the Blue Mountains. Located on the cliffs of the Jamison Valley, visitors can enjoy a ride on the Scenic Railway (the world's steepest incline railway) or the Scenic Cableway, into the Jamison Valley, and explore the Scenic Walkway from the base. Alternatively, the Scenic Skyway offers a bird's eye view over the valley, with a glass floor to enhance the experience. Scenic World also features a revolving restaurant, a cafe and a kiosk, in addition to the documentary theatre and souvenir shop. Rides can be purchased, starting from \$16 for adults and \$10 for children, and combination or family passes are available. [More info.](#)





Blue Mountains National Park

Ech Point Information Centre

Lady Game Lookout
The Three Sisters

KCC

Scenic Point

2.72

2.89

3.06

6.50

Summary navigation sheet for the Scenic Railway - Federal Pass Track



km	From	Up/Dwn	Length	Initial directions (Use full tracknotes and maps for more detail)
Start	Echo Point Archway Intersection -33.732,150.3127 (GR Katoomba, 510643)	19 -47	430 m 12 mins	From the archway, this walk follows the lower of the two footpaths heading away from Echo Point, for approximately 30m, before coming to the intersection of the Spooners Lookout track.
0.43	Oreades Lookout -33.7344,150.3147 (GR Katoomba, 512641)	0 -11	20 m 1 mins	Continue straight: From Oreades Lookout platform, this walk follows the main path down the steps, keeping the valley views to the right.
0.45	Int of Lady Game Lookout Track and the Three Sisters Footpath -33.7345,150.3148 (GR Katoomba, 512640)	0 -10	20 m 1 mins	Continue straight: From the intersection, the walk follows the footpath down the gentle hill towards the Three Sisters, passing under a rock archway and coming to the top of the Giant Staircase.
0.46	Top of the Giant Staircase -33.7347,150.3148 (GR Katoomba, 512640)	0 -12	10 m 1 mins	Optional sidetrip to Lady Game Lookout. Continue straight: From the intersection, the walk follows the footpath down the hill towards the Three Sisters for about 10m before coming to the Lady Game Lookout.
0.46	Top of the Giant Staircase -33.7347,150.3148 (GR Katoomba, 512640)	0 -31	40 m 4 mins	Turn left: From the intersection, the walk follows the steep stairs, winding down the side of the cliffs, to the intersection next to the bridge (which goes across to the overhang under the First Sister).
0.50	The Three Sisters Bridge Intersection -33.7349,150.3149 (GR Katoomba, 512640)	0 0	10 m	Optional sidetrip to The Three Sisters. Turn right: From the intersection, the walk crosses the bridge over to the Three Sisters.
0.50	The Three Sisters Bridge intersection -33.7349,150.3149 (GR Katoomba, 512640)	20 -151	200 m 19 mins	Veer left: From the bridge, the walk goes steeply down the cliff using the metal Giant staircase with handrails.
0.71	Bottom of Giant Staircase -33.7343,150.3161 (GR Katoomba, 513641)	33 -36	290 m 10 mins	Turn right: From the bottom of the Giant Staircase, the walk follows the 'Scenic Railway' sign, keeping the main cliff to the right.
1.00	Int of Federal Pass, Scenic Railway and Dardenelles Tracks -33.7367,150.3155 (GR Katoomba, 513638)	179 -169	1.7 km 52 mins	Turn right: From the intersection, the walk follows the 'Federal Pass' sign towards 'Scenic Railway', keeping the main cliffs on the right.
2.72	Cooks Crossing -33.7285,150.3041 (GR Katoomba, 502647)	21 -12	170 m 5 mins	Continue straight: From the intersection, this walk heads south-west away from Katoomba Falls along the bush track, soon passing the signposted 'Turpentine Tree'.
2.89	Int of Furber Steps and Scenic Railway Track -33.7296,150.303 (GR Katoomba, 501646)	233 -36	700 m 24 mins	Alternate Route Int of Furber Steps and Scenic Railway Track. Turn right: From the intersection, this walk heads up the stairs.
2.89	Int of Furber Steps and Scenic Railway Track -33.7296,150.303 (GR Katoomba, 501646)	10 -15	170 m 4 mins	Continue straight: From the bottom of Furber Steps, this walk follows the 'To base of scenic railway' sign keeping the handrail on the left, and following the flat bush track.
3.06	Scenic Railway (Bottom Platform) -33.7306,150.3017 (GR Katoomba, 500644)	210 -8	300 m 26 mins	Turn left: From the bottom platform, this walk heads up to the cliff top using the Scenic Railway.